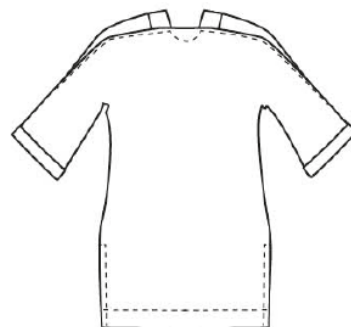
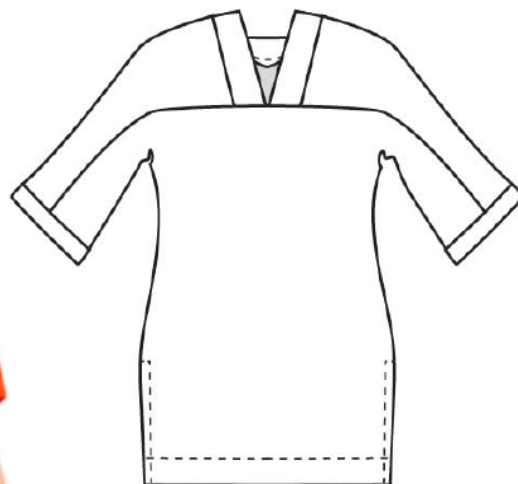




## TUNIC SITA

XS - 2XL



### Tunic SITA

The SITA tunic is a relatively slender, relaxed cut with grown on 7/8 length sleeves and sleeve cuffs. The neckline with neckband imitates a collar, but is much easier to construct. The shoulder seam is placed slightly to the back.

Length from shoulder to hem: approx 88cm / 34 1/2in  
Sleeve length from neckline: about 50cm / 19 1/2in

### CONTENT

- Multi-size pattern in sizes: XS - 2XL
- Illustrated instructions
- Print-your-size: PDF with sizes on several levels

### WHAT YOU NEED

- Light weight knit fabrics, e.g. cotton, linen, silk or blends
- Contrasting fabric for neckline band and cuffs
- Thread
- For very light contrasting fabrics: fusible interfacing, e.g. Vlieseline H200, 20cm / 8in

### FABRIC REQUIREMENTS

	110cm / 43in	120-140cm / 47-55in	120-140cm / 47-55in
		with border print	no border print
XS - S	2.2m / 2 1/2yd	2.2m / 2 1/2yd	1.7m / 1 7/8yd
M-XL	2.3m / 2 1/2yd	2.3m / 2 1/2yd	1.8m / 2yd
2XL	2.4m / 2 5/8yd	2.4m / 2 5/8yd	1.8m / 2yd
contrast fabric width	110-120cm / 43-47in	140cm / 55in	
XS-L	20cm / 8in	10cm / 4in	
XL-2XL	20cm / 8in	20cm / 8in	

SEWING PATTERN  
by Stefanie Kroth

[www.so-pattern.com](http://www.so-pattern.com)