

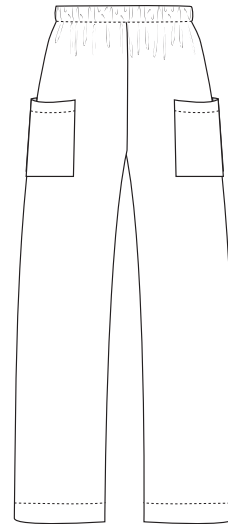


TROUSERS HOLLY

XS - 2XL



HOLLY cosy
ohne Tasche



HOLLY TROUSERS

Very wide culottes with bell shaped legs, inseam pockets and a concealed zip at centre back. Waistband sits at waist height.

Length at side for size L: approx 105cm / 41.5in

INHALT

- Multi-size pattern in sizes: XS - 2XL
- Print-your-size: PDF with sizes in several levels

WHAT YOU NEED

- Woven Fabrics, e.g. cotton, viscose, linen, tencel, silk, light wool, light denim
- Elastic band for waistband, approx 3.5cm/1.25in wide and 1m/39.5in long up to size XL | 1.1m/43.5in for size 2XL
- optional: elastic band for trouser hems, approx 2.5cm/1in wide and 70cm/27.5in long
- Thread
- Safety pin

FABRIC REQUIREMENTS

fabric width	140 cm / 55in
XS/M	1,6m / 1 3/4yd
L/2XL	2m / 2 1/4yd

SCHNITTMUSTER
von Sonja Stern