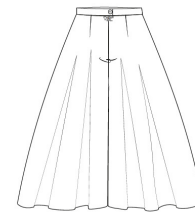
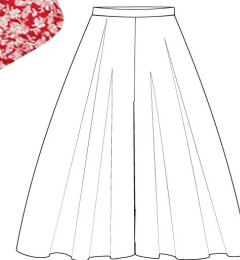




CULOTTES BELLA

S - 2XL



SCHNITTMUSTER
von Sonja Stern

www.so-pattern.com

Culottes BELLA

Very wide culottes with bell shaped legs, inseam pockets and a concealed zip at centre back. Waistband sits at waist height.

Centre back length from waistband for size L:
about 74cm/29in

INHALT

- Multi-size pattern in sizes: S - 2XL

WHAT YOU NEED

- Light to medium weight woven fabric, e.g. poplin, canvas, denim, cord, wool, linen, silk
- Concealed zip, 20cm/8in
- Concealed zipper foot
- Button
- Thread
- Fusible Interfacing, e.g. Vlieseline H200, 20cm/8in

FABRIC REQUIREMENTS

fabric width	110 cm / 43in	140 cm / 55in
XS/S	2.9m / 3 1/4yd	2.9m / 3 1/4yd
M/L	3.1m / 3 1/2 yd	3.1m / 3 1/2 yd
XL/2XL	3.3m / 3 3/4yd	3.3m / 3 3/4yd